

Maritime Safety Queensland



Gold Coast Seaway

Beacon to Beacon Guide

Northern Gold Coast

Published by

Maritime Safety Queensland

© Copyright The State of Queensland
(Department of Transport and Main Roads) 2020



To view a copy of this licence, visit
<https://creativecommons.org/licenses/by/4.0/>

For commercial use terms and conditions

Please visit the Maritime Safety Queensland
website at www.msq.qld.gov.au

'How to' use this guide

Use this Beacon to Beacon Guide with
the 'How to' and legend booklet available from
www.msq.qld.gov.au



Queensland
Government

Marine rescue services

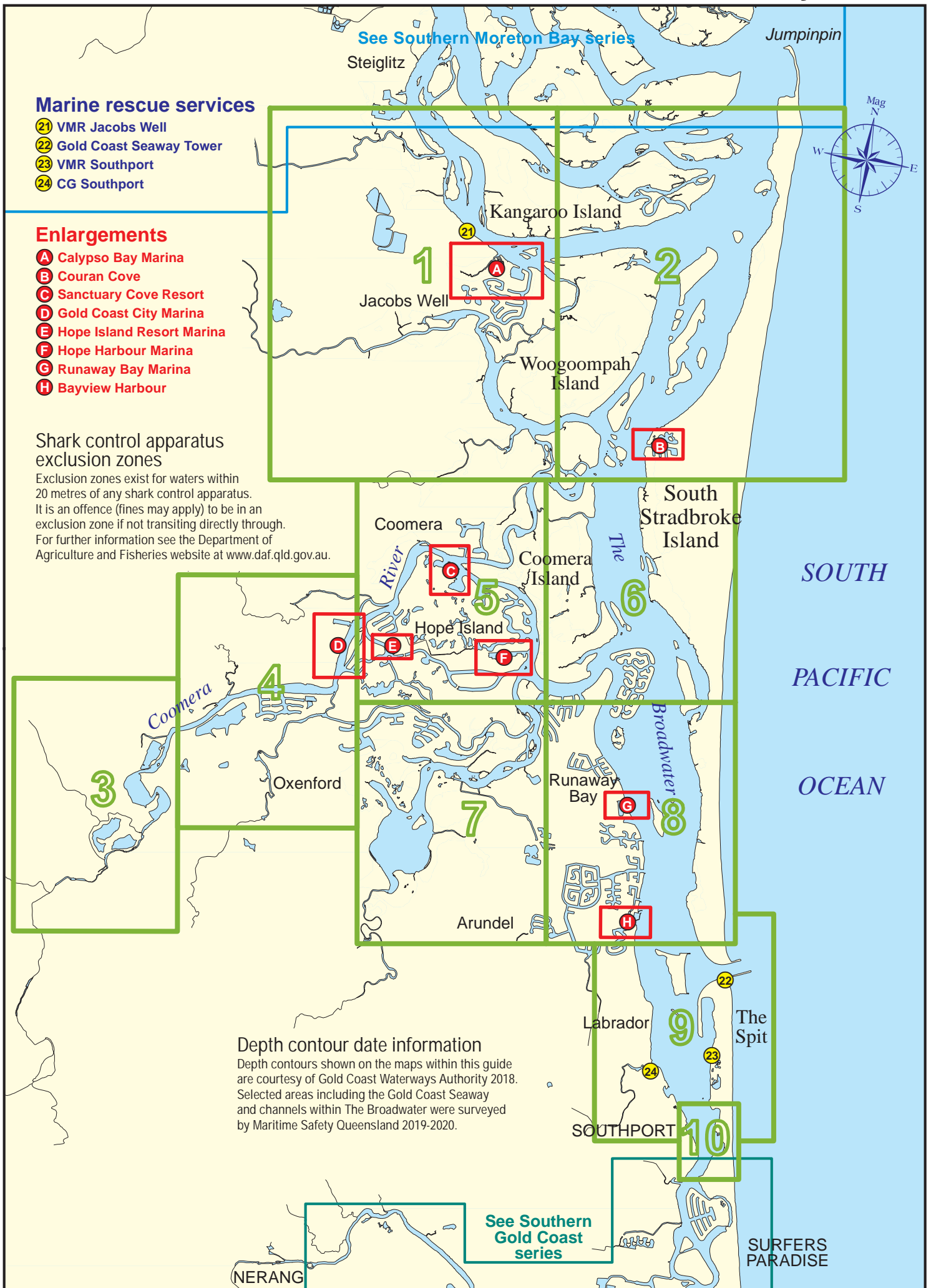
- 21 VMR Jacobs Well
- 22 Gold Coast Seaway Tower
- 23 VMR Southport
- 24 CG Southport

Enlargements

- A Calypso Bay Marina
- B Couran Cove
- C Sanctuary Cove Resort
- D Gold Coast City Marina
- E Hope Island Resort Marina
- F Hope Harbour Marina
- G Runaway Bay Marina
- H Bayview Harbour

Shark control apparatus exclusion zones

Exclusion zones exist for waters within 20 metres of any shark control apparatus. It is an offence (fines may apply) to be in an exclusion zone if not transiting directly through. For further information see the Department of Agriculture and Fisheries website at www.daf.qld.gov.au.



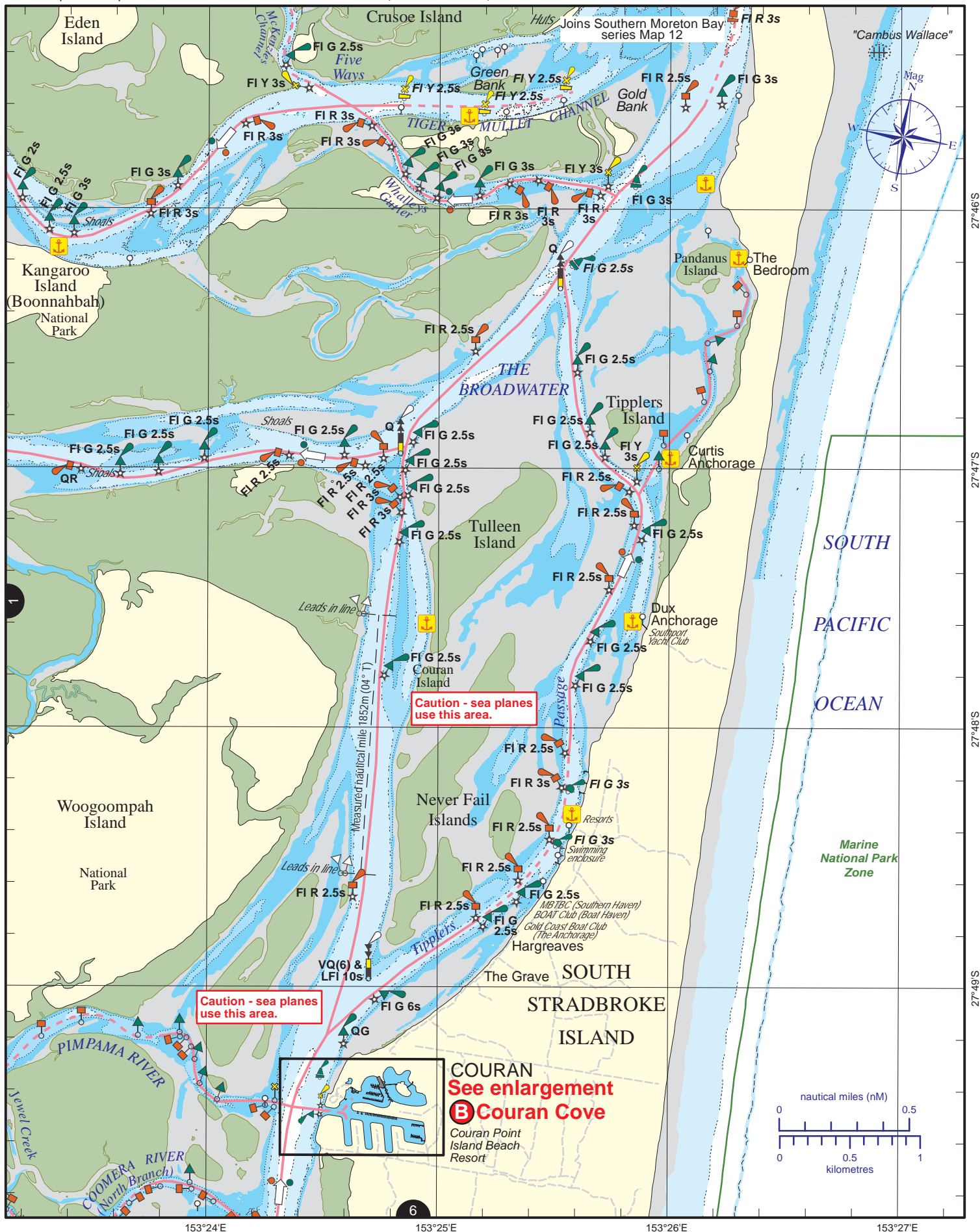
Depth contour date information

Depth contours shown on the maps within this guide are courtesy of Gold Coast Waterways Authority 2018. Selected areas including the Gold Coast Seaway and channels within The Broadwater were surveyed by Maritime Safety Queensland 2019-2020.

See Southern Gold Coast series

SURFERS PARADISE





Always keep a proper lookout when boating.
Look up and live for power and cable crossings that may not be shown on these maps due to scale or recent construction.
For depth contour date information, refer to the Key Sheet for this guide. Note that depths may change following floods.
Exercise care when travelling outside suggested navigation tracks.

Nautical information current to 6 July 2020

CG Southport: base phone 5531 1421, Mon-Thu 0800-1800, 24 hrs w/e (Fri 0800-Sun 1800), 27MHz 91 88 86, VHF 73 21 22 67 81 82 16, MF/HF 2524.

This map illustrates the Coomera River and its associated waterways, including the Sea Eagle Lagoon and various causeways. The river flows from the north towards the south, passing through Upper Coomera, Oxenford, and Maudsland. Key features include:

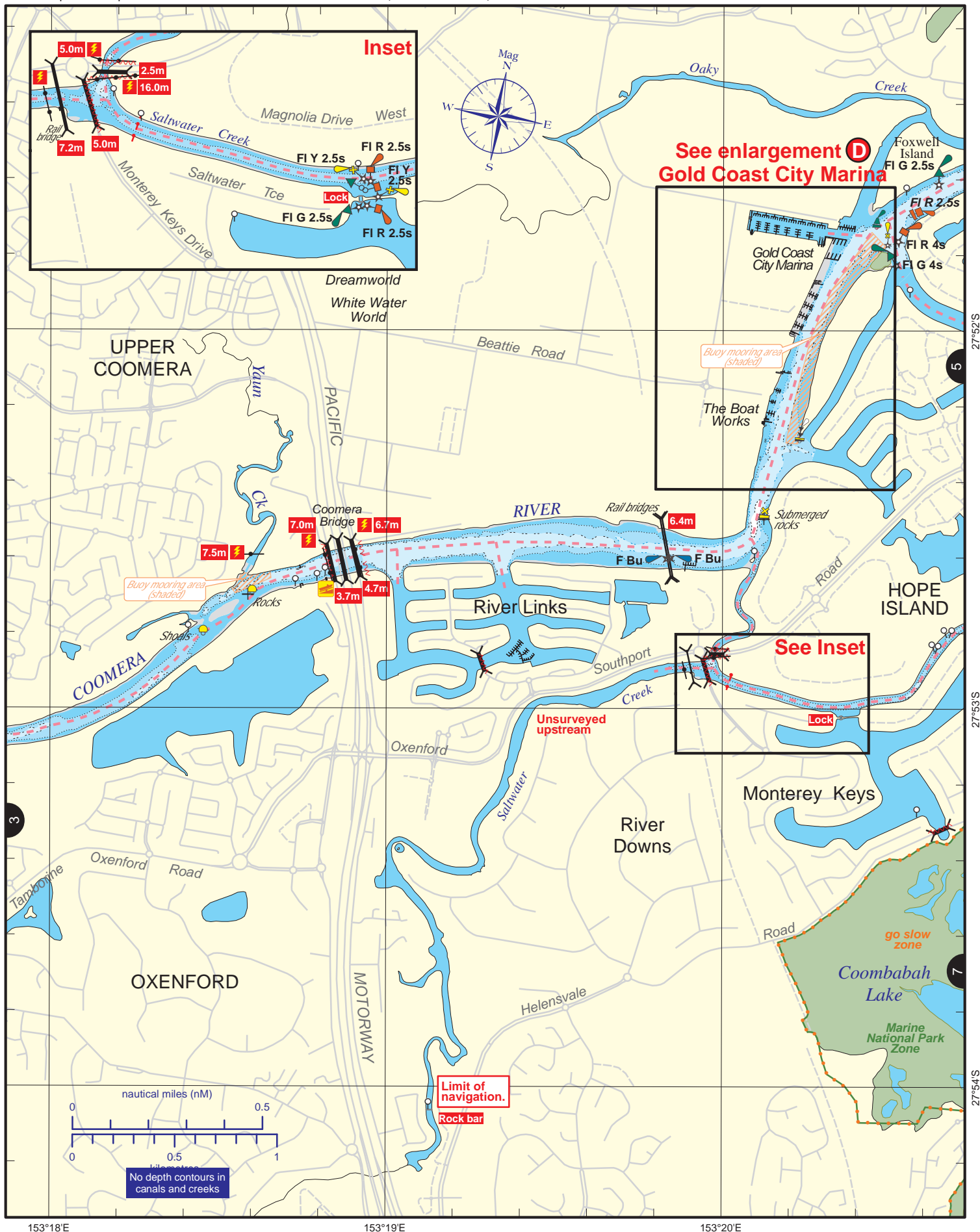
- Upper Coomera:** Located in the north, featuring the Sea Eagle Lagoon and the 'Limit of navigation' point.
- Oxenford:** Situated to the east of Upper Coomera, featuring a 'Causeway' near John Muntz.
- Maudsland:** Located to the south, featuring a 'Causeway' near Maudsland.
- Roads:** Several roads are shown, including Oxenford Road, Maudsland Road, and Gaven Road.
- Scale:** A scale bar indicates distances in nautical miles (0 to 0.5) and kilometers (0 to 1).
- Compass:** A compass rose shows magnetic north (Mag N) and true north (N).
- Note:** 'No depth contours in upper reaches'.

Nautical information current to 6 July 2020

For depth contour date information, refer to the Key Sheet for this guide. Note that depths may change following floods.

© Copyright The State of Queensland 2020
Queensland Department of Transport and Main Roads - Maritime Safety Queensland.
To reproduce any map within this series, see terms and conditions at Maritime Safety Queensland's website (www.msq.qld.gov.au)





Always keep a proper lookout when boating.

Look up and live for power and cable crossings that may not be shown on these maps due to scale or recent construction.

For depth contour date information, refer to the Key Sheet for this guide. Note that depths may change following floods.

Exercise care when travelling outside suggested navigation tracks.

© Copyright The State of Queensland 2020

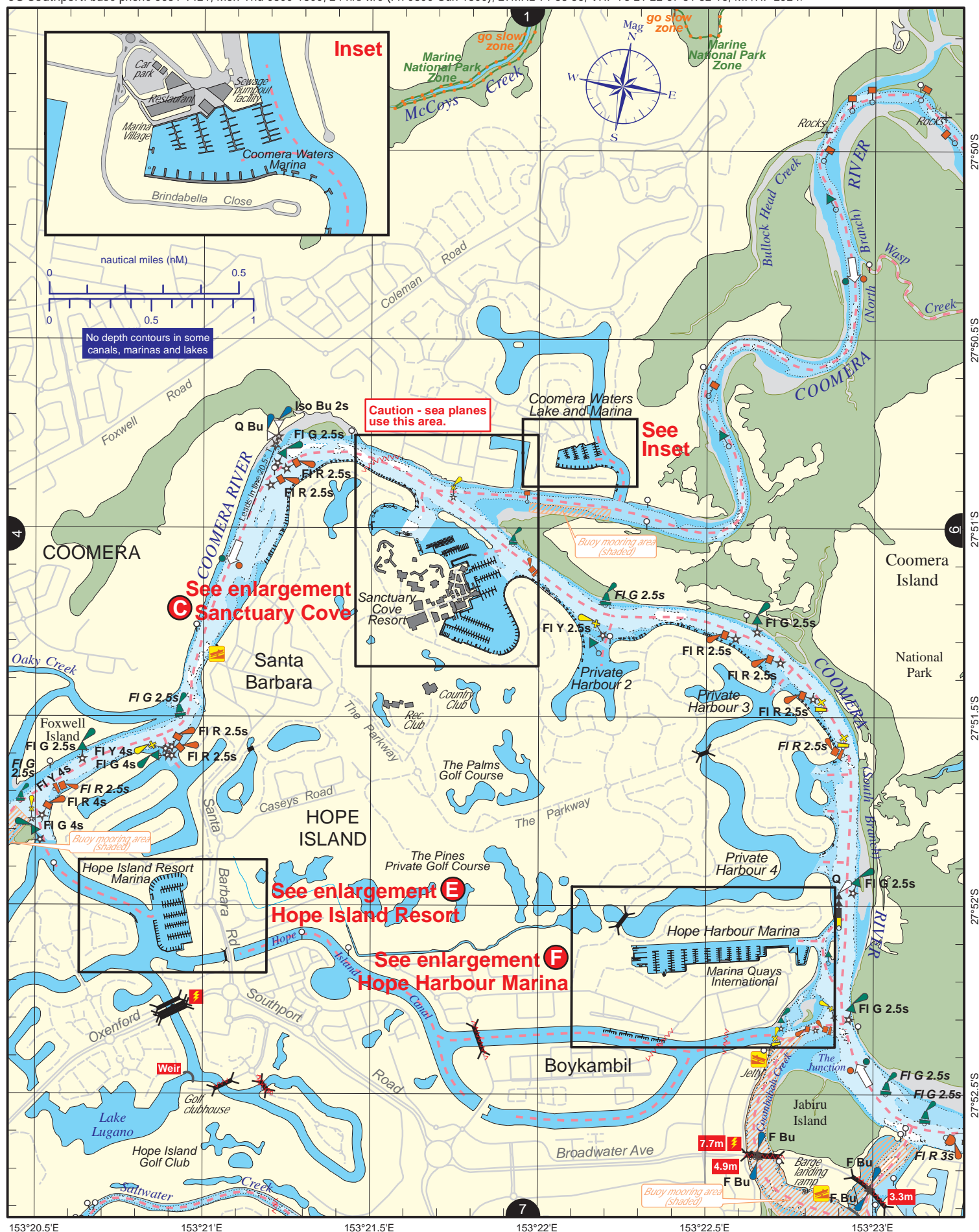
Queensland Department of Transport and Main Roads - Maritime Safety Queensland.

To reproduce any map within this series, see terms and conditions at Maritime Safety Queensland's website (www.msq.qld.gov.au)

Nautical information current to 6 July 2020



CG Southport: base phone 5531 1421, Mon-Thu 0800-1800, 24 hrs w/e (Fri 0800-Sun 1800), 27MHz 91 88 86, VHF 73 21 22 67 81 82 16, MF/HF 2524.



Always keep a proper lookout when boating.

Look up and live for power and cable crossings that may not be shown on these maps due to scale or recent construction.

For depth contour date information, refer to the Key Sheet for this guide. Note that depths may change following floods.

Exercise care when travelling outside suggested navigation tracks.

© Copyright The State of Queensland 2020

Queensland Department of Transport and Main Roads - Maritime Safety Queensland.

To reproduce any map within this series, see terms and conditions at Maritime Safety Queensland's website (www.msg.qld.gov.au)

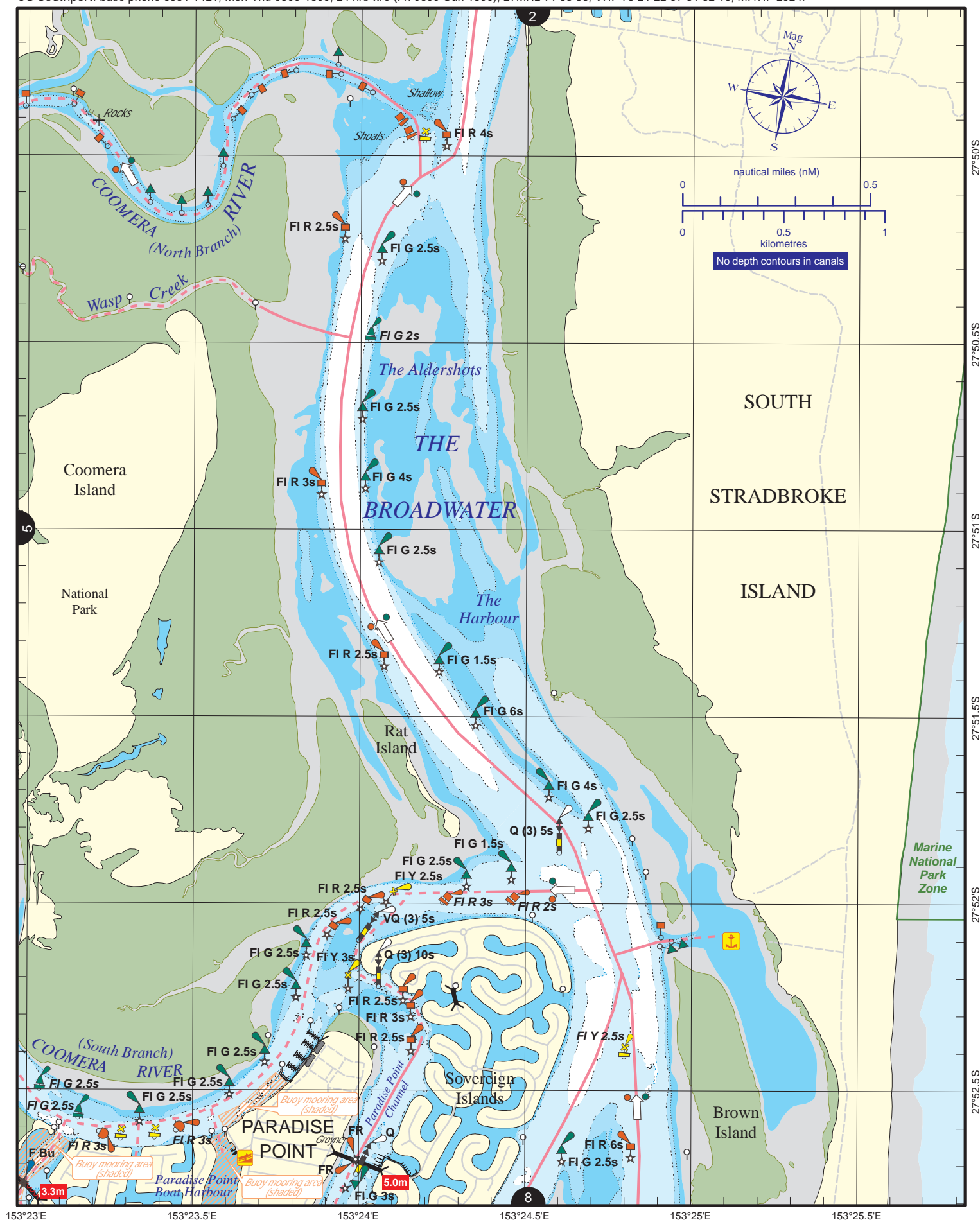
Nautical information current to 6 July 2020



Queensland
Government

CG Southport: base phone 5531 1421, Mon-Thu 0800-1800, 24 hrs w/e (Fri 0800-Sun 1800), 27MHz 91 88 86, VHF 73 21 22 67 81 82 16, MF/HF 2524.

NGC-6



Always keep a proper lookout when boating.

Look up and live for power and cable crossings that may not be shown on these maps due to scale or recent construction.

For depth contour date information, refer to the Key Sheet for this guide. Note that depths may change following floods.

Exercise care when travelling outside suggested navigation tracks.

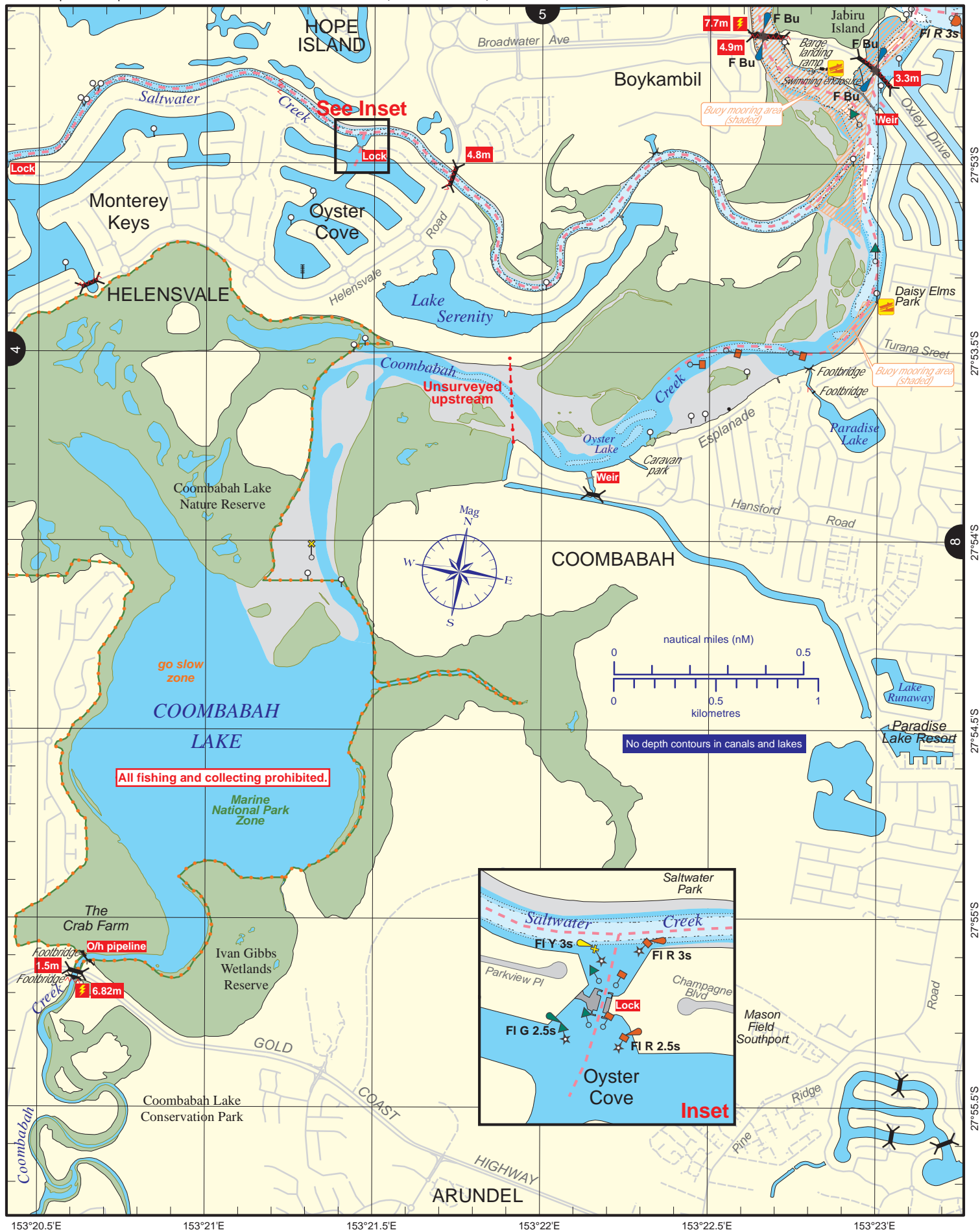
© Copyright The State of Queensland 2020

Queensland Department of Transport and Main Roads - Maritime Safety Queensland.

To reproduce any map within this series, see terms and conditions at Maritime Safety Queensland's website (www.msg.qld.gov.au)

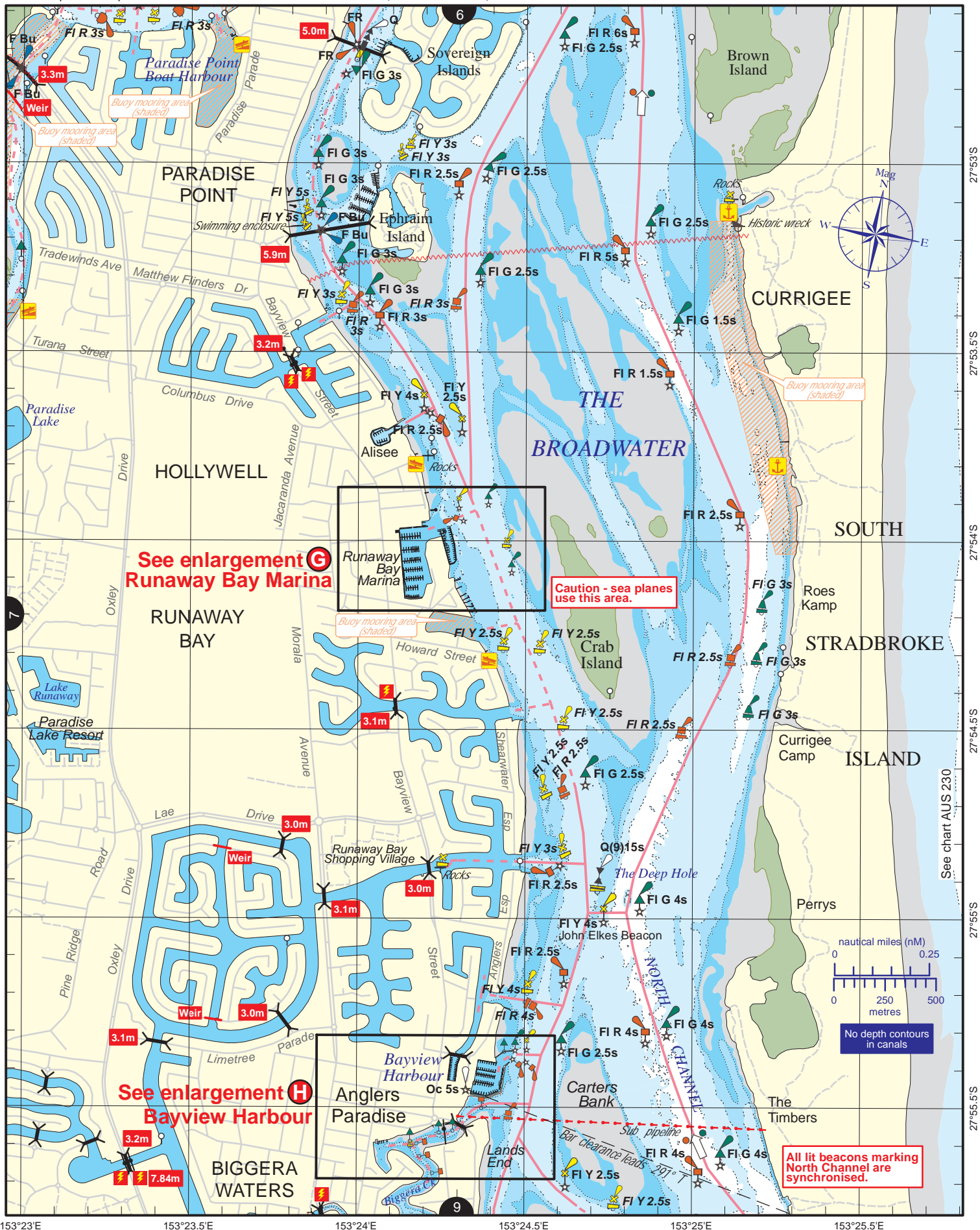
Nautical information current to 6 July 2020





Always keep a proper lookout when boating.
Look up and live for power and cable crossings that may not be shown on these maps due to scale or recent construction.
 For depth contour date information, refer to the Key Sheet for this guide. Note that depths may change following floods.
Exercise care when travelling outside suggested navigation tracks.

Nautical information current to 6 July 2020



CG Southport: base phone 5531 1421, Mon-Thu 0800-1800, 24 hrs w/e (Fri 0800-Sun 1800), 27MHz 91 88 86, VHF 73 21 22 67 81 82 16, MF/HF 2524.

Nautical information current to 6 July 2020

For depth contour date information, refer to the Key Sheet for this guide. Note that depths may change following floods.



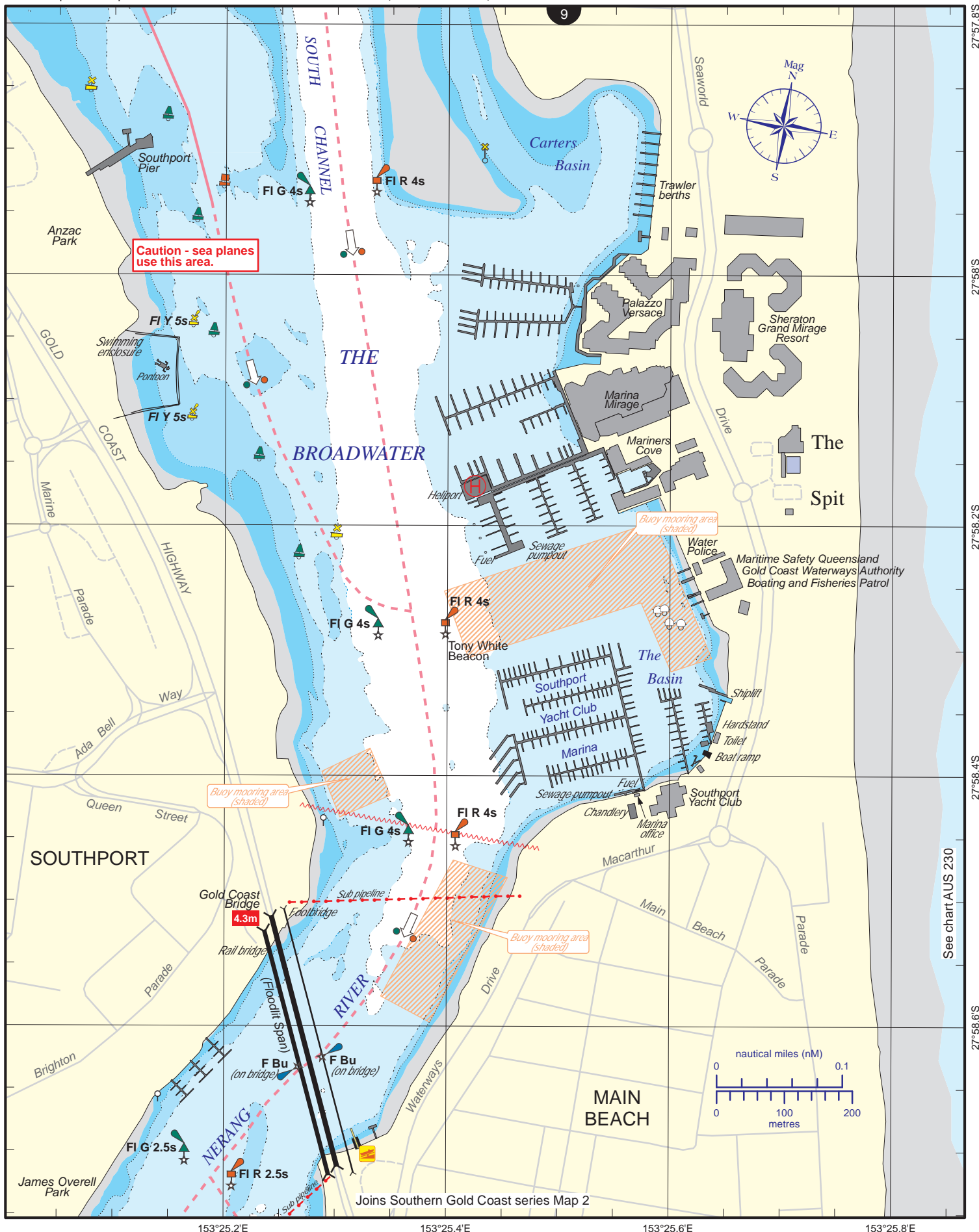
Queensland
Government

To reproduce any map within this series, see terms and conditions at Maritime Safety Queensland's website (www.msg.qld.gov.au)

VMR Southport: base phone 5591 1300, 24 hrs 7 days, 27MHz 86 88 91, VHF 16 22 67 73 82, MF/HF 2182 2524 4125 4483.

CG Southport: base phone 5531 1421, Mon-Thu 0800-1800, 24 hrs w/e (Fri 0800-Sun 1800), 27MHz 91 88 86, VHF 73 21 22 67 81 82 16, MF/HF 2524.

NGC-10



Always keep a proper lookout when boating.

Look up and live for power and cable crossings that may not be shown on these maps due to scale or recent construction.

For depth contour date information, refer to the Key Sheet for this guide. Note that depths may change following floods.

Exercise care when travelling outside suggested navigation tracks.

© Copyright The State of Queensland 2020

Queensland Department of Transport and Main Roads - Maritime Safety Queensland.

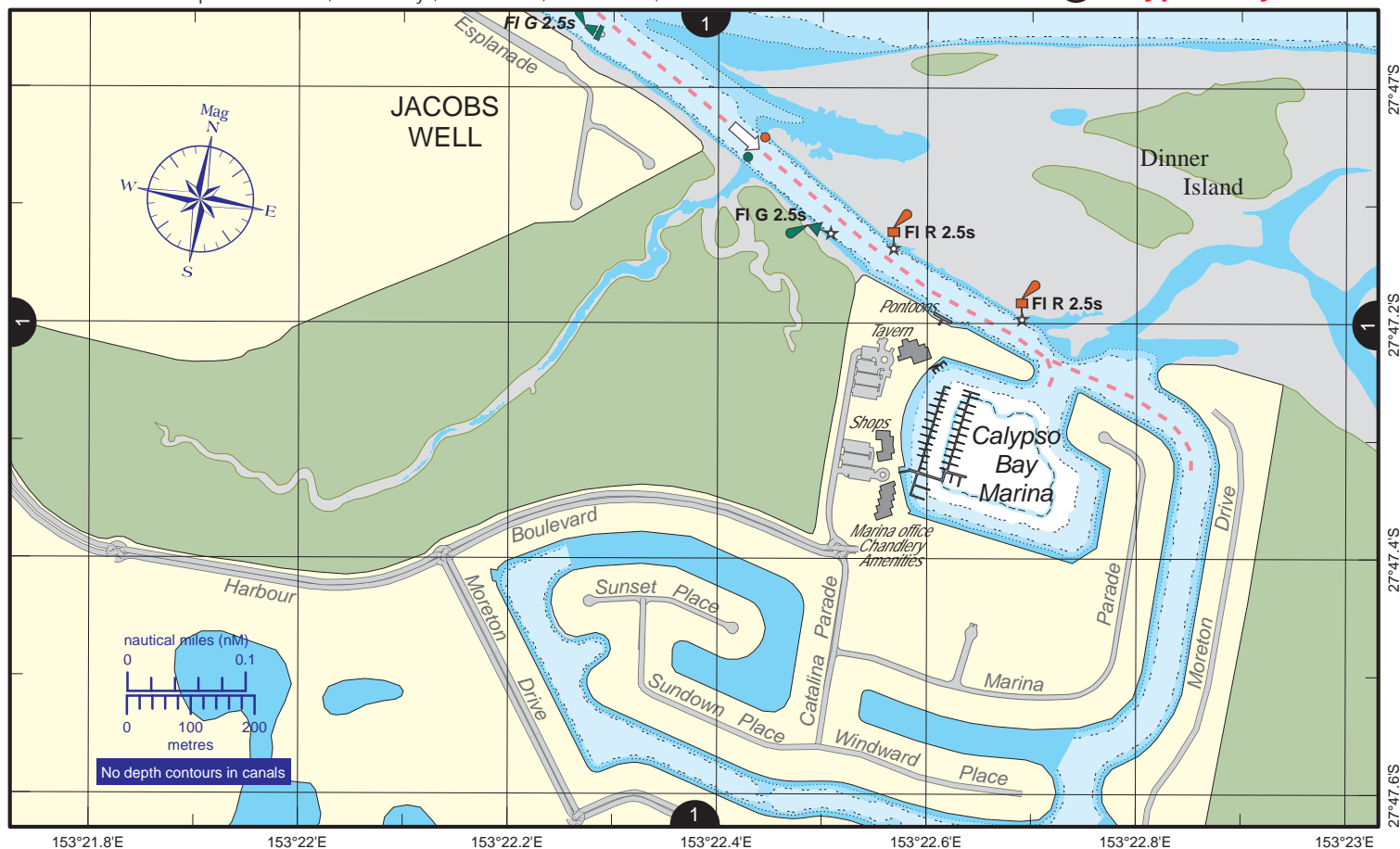
To reproduce any map within this series, see terms and conditions at Maritime Safety Queensland's website (www.msq.qld.gov.au)

Nautical information current to 6 July 2020



VMR Jacobs Well: base phone 5546 1100, 24hrs 7 days, 27MHz 88 91, VHF 16 67 82, MF/HF 2112 2182 2201 2524 4125 6215.

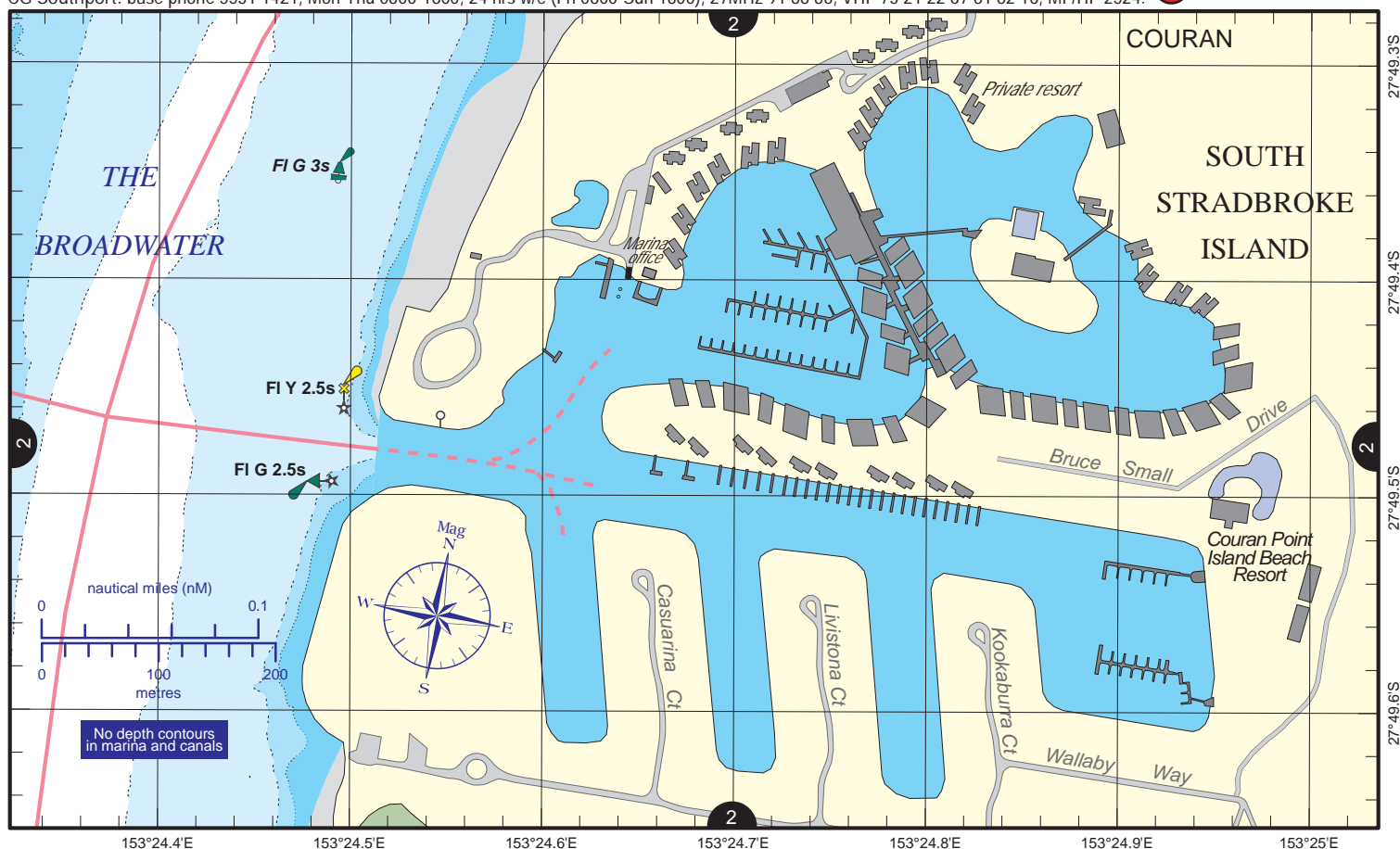
A Calypso Bay Marina



VMR Jacobs Well: base phone 5546 1100, 24 hrs 7 days, 27MHz 88 91, VHF 16 67 82, MF/HF 2112 2182 2524 4125 6215.

CG Southport: base phone 5531 1421, Mon-Thu 0800-1800, 24 hrs w/e (Fri 0800-Sun 1800), 27MHz 91 88 86, VHF 73 21 22 67 81 82 16, MF/HF 2524.

B Couran Cove



Always keep a proper lookout when boating.

Look up and live for power and cable crossings that may not be shown on these maps due to scale or recent construction.

For depth contour date information, refer to the Key Sheet for this guide. Note that depths may change following floods.

Exercise care when travelling outside suggested navigation tracks.

© Copyright The State of Queensland 2020

Queensland Department of Transport and Main Roads - Maritime Safety Queensland.

To reproduce any map within this series, see terms and conditions at Maritime Safety Queensland's website (www.msq.qld.gov.au)

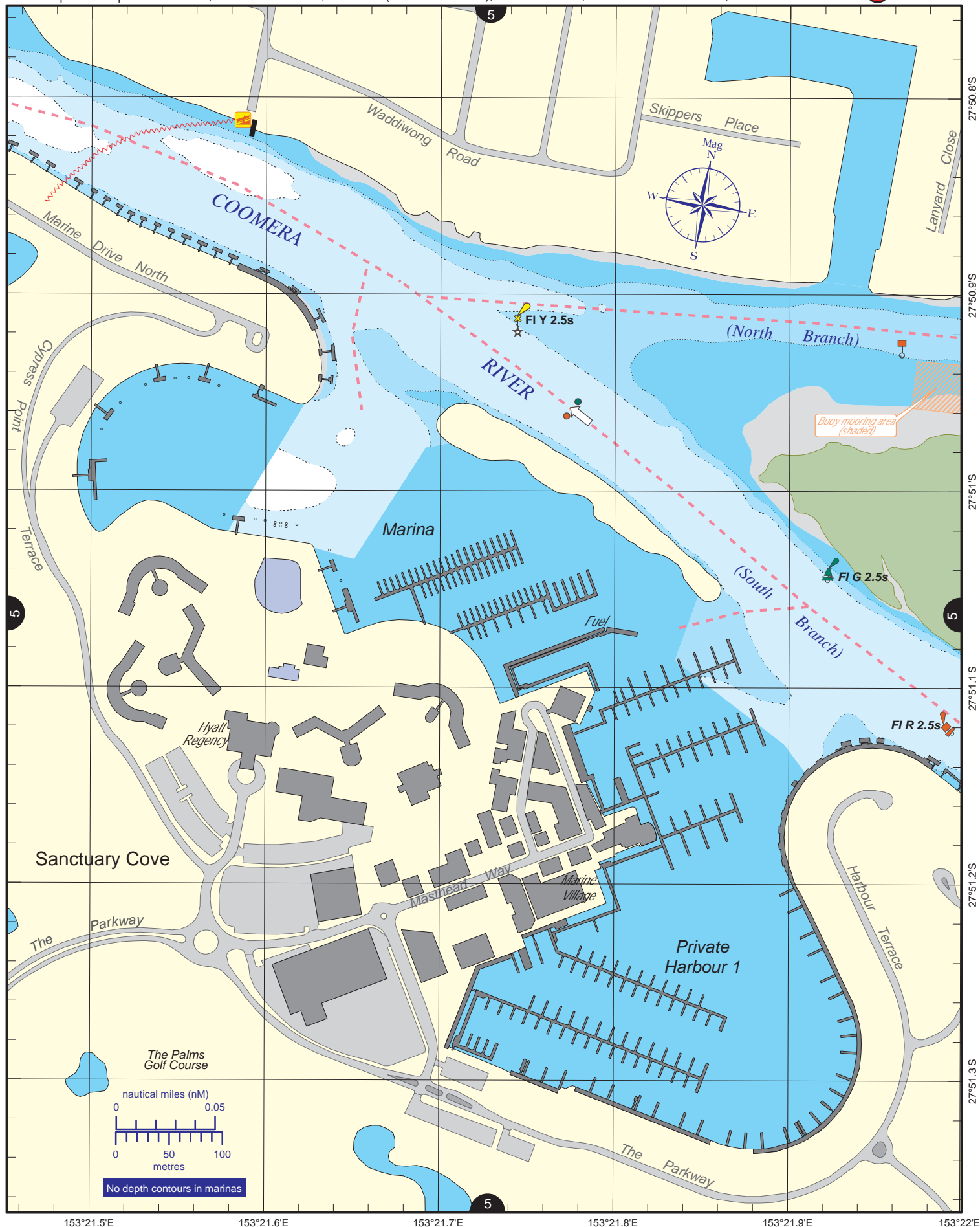
Nautical information current to 6 July 2020



VMR Southport: base phone 5591 1300, 24 hrs 7 days, 27MHz 86 88 91, VHF 16 22 67 73 82, MF/HF 2182 2524 4125 4483.

CG Southport: base phone 5531 1421, Mon-Thu 0800-1800, 24 hrs w/e (Fri 0800-Sun 1800), 27MHz 91 88 86, VHF 73 21 22 67 81 82 16, MF/HF 2524.

**Sanctuary Cove
Resort**



Always keep a proper lookout when boating.

Look up and live for power and cable crossings that may not be shown on these maps due to scale or recent construction.

For depth contour date information, refer to the Key Sheet for this guide. Note that depths may change following floods.

Exercise care when travelling outside suggested navigation tracks.

© Copyright The State of Queensland 2020

Queensland Department of Transport and Main Roads - Maritime Safety Queensland.

To reproduce any map within this series, see terms and conditions at Maritime Safety Queensland's website (www.msq.qld.gov.au)

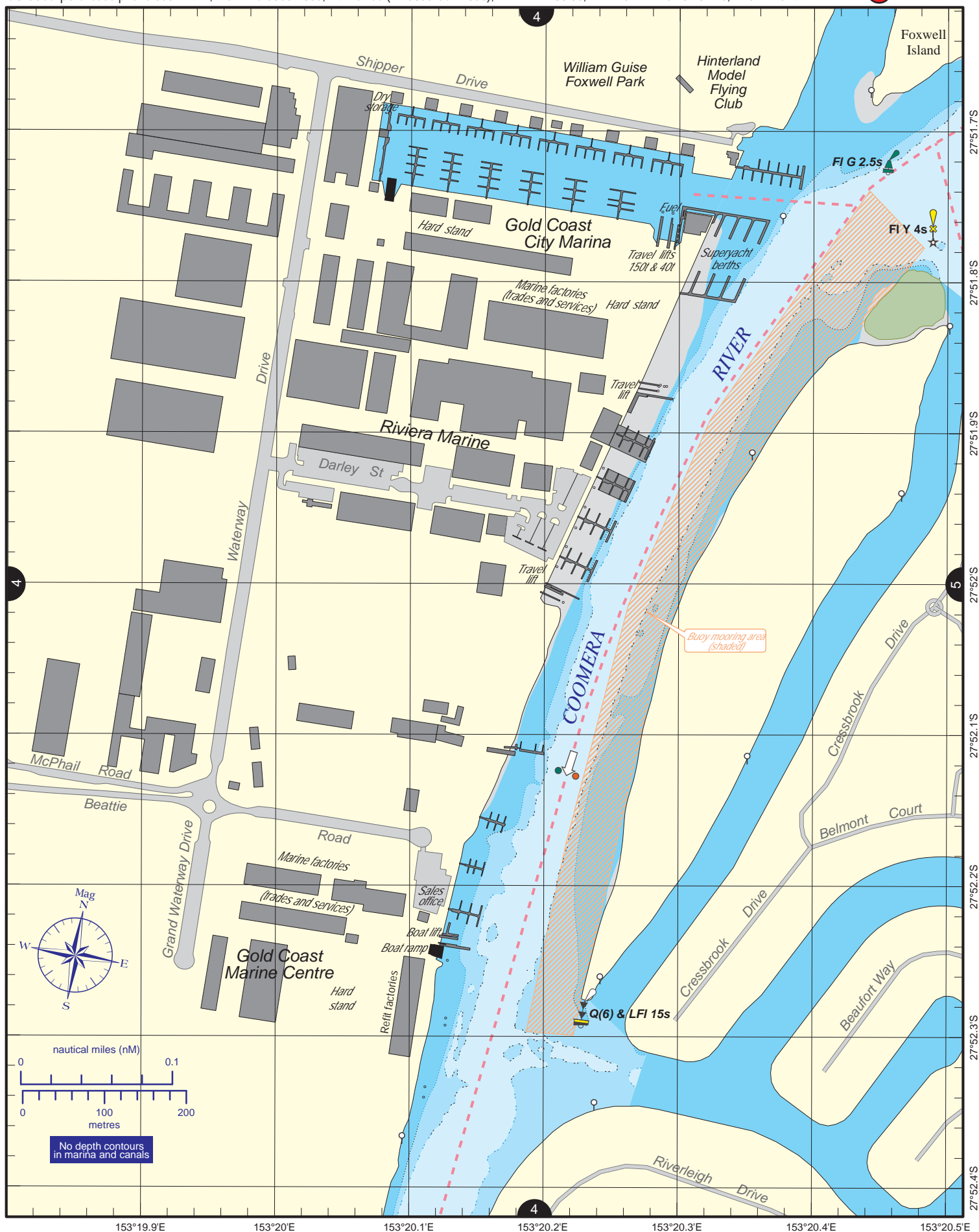
Nautical information current to 6 July 2020



VMR Southport: base phone 5591 1300, 24 hrs 7 days, 27MHz 86 88 91, VHF 16 22 67 73 82, MF/HF 2182 2524 4125 4483.

CG Southport: base phone 5531 1421, Mon-Thu 0800-1800, 24 hrs w/e (Fri 0800-Sun 1800), 27MHz 91 88 86, VHF 73 21 22 67 81 82 16, MF/HF 2524.

Gold Coast City
D Marina



Always keep a proper lookout when boating.

Look up and live for power and cable crossings that may not be shown on these maps due to scale or recent construction.

For depth contour date information, refer to the Key Sheet for this guide. Note that depths may change following floods.

Exercise care when travelling outside suggested navigation tracks.

© Copyright The State of Queensland 2020

Queensland Department of Transport and Main Roads - Maritime Safety Queensland.

To reproduce any map within this series, see terms and conditions at Maritime Safety Queensland's website (www.msq.qld.gov.au)

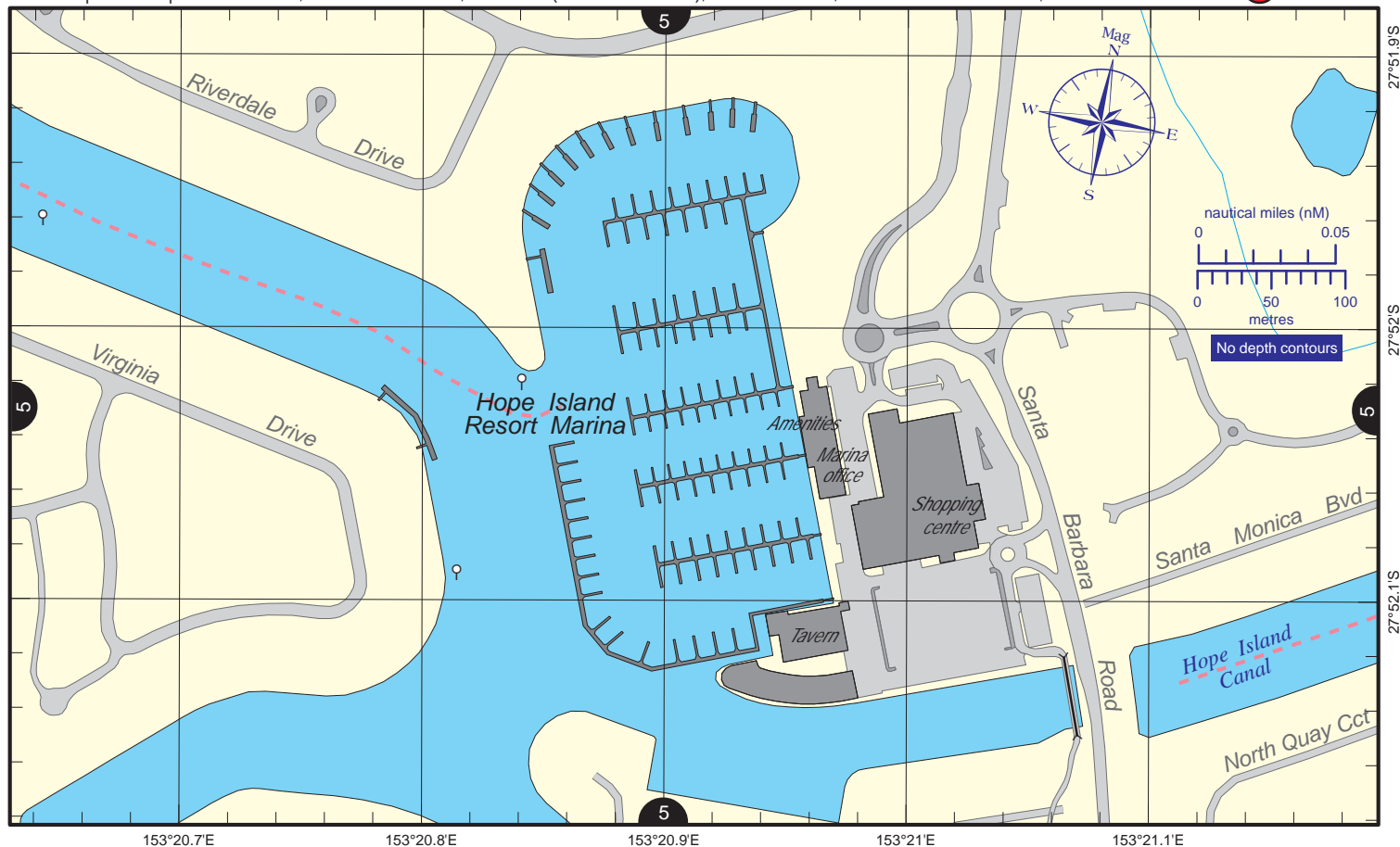
Nautical information current to 6 July 2020



VMR Southport: base phone 5591 1300, 24 hrs 7 days, 27MHz 86 88 91, VHF 16 22 67 73 82, MF/HF 2182 2524 4125 4483.

CG Southport: base phone 5531 1421, Mon-Thu 0800-1800, 24 hrs w/e (Fri 0800-Sun 1800), 27MHz 91 88 86, VHF 73 21 22 67 81 82 16, MF/HF 2524.

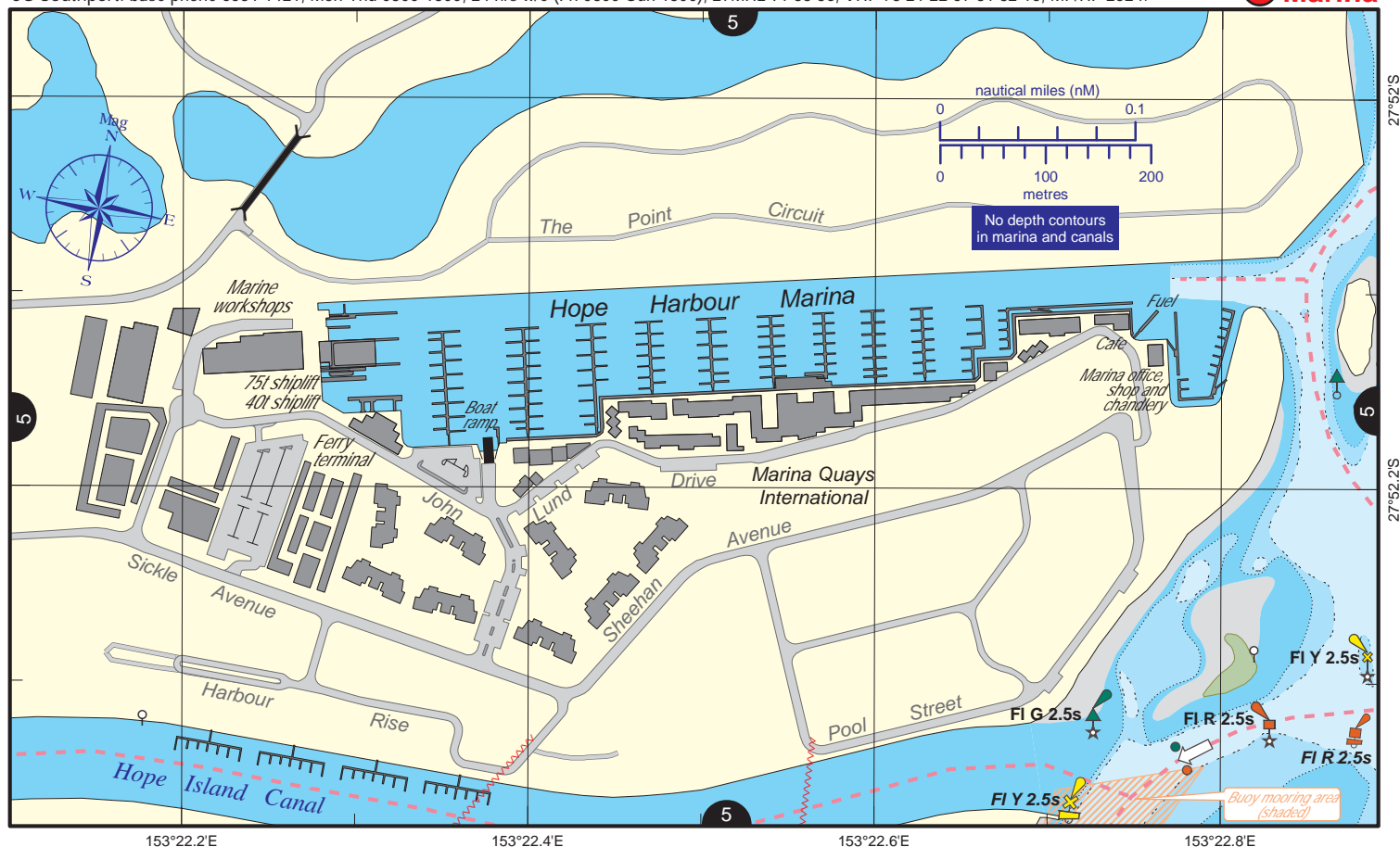
Hope Island Resort Marina



VMR Southport: base phone 5591 1300, 24 hrs 7 days, 27MHz 86 88 91, VHF 16 22 67 73 82, MF/HF 2182 2524 4125 4483.

CG Southport: base phone 5531 1421, Mon-Thu 0800-1800, 24 hrs w/e (Fri 0800-Sun 1800), 27MHz 91 88 86, VHF 73 21 22 67 81 82 16, MF/HF 2524.

Hope Harbour Marina



Always keep a proper lookout when boating.

Look up and live for power and cable crossings that may not be shown on these maps due to scale or recent construction.

For depth contour date information, refer to the Key Sheet for this guide. Note that depths may change following floods.

Exercise care when travelling outside suggested navigation tracks.

© Copyright The State of Queensland 2020

Queensland Department of Transport and Main Roads - Maritime Safety Queensland.

To reproduce any map within this series, see terms and conditions at Maritime Safety Queensland's website (www.msq.qld.gov.au)

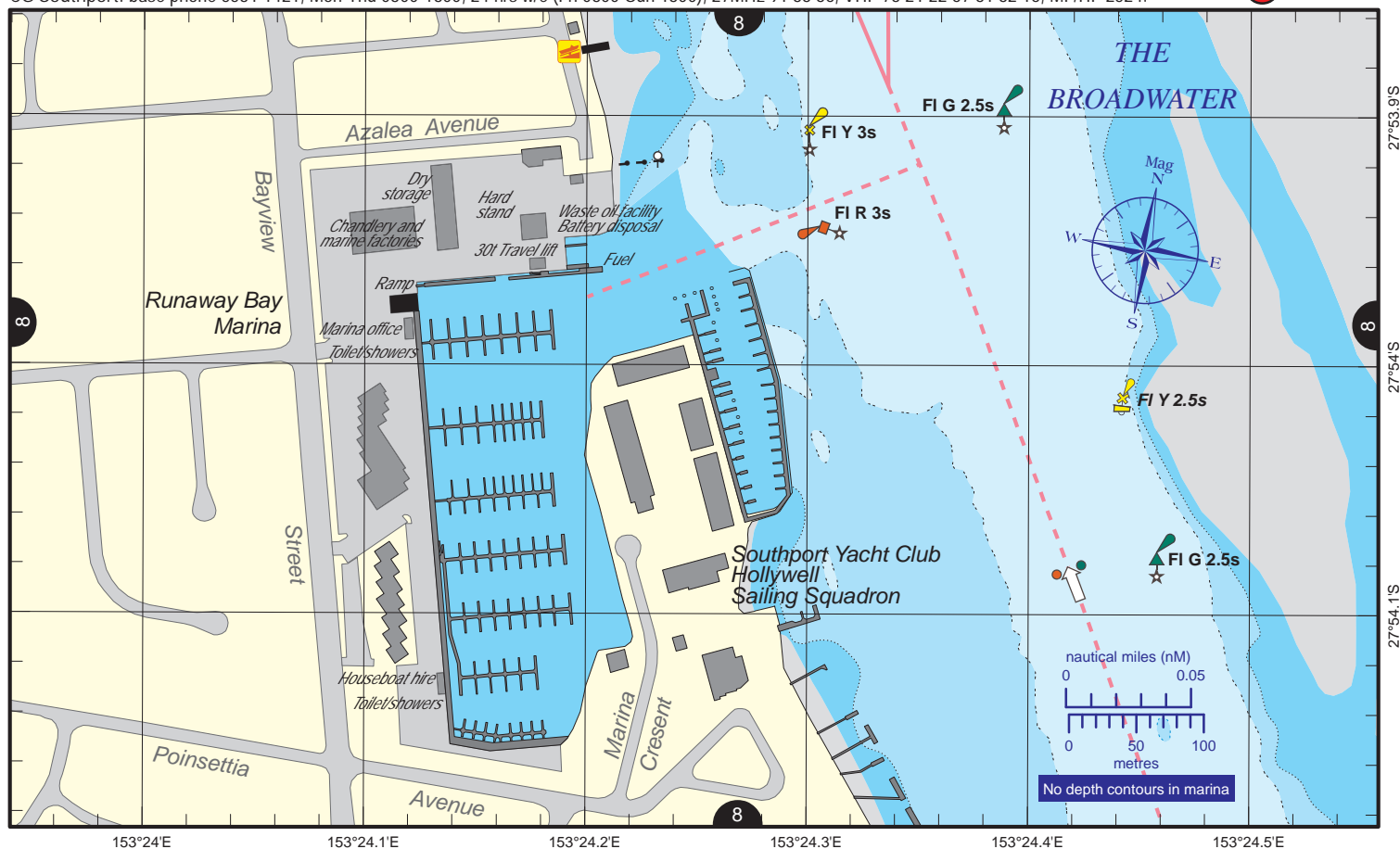
Nautical information current to 6 July 2020



VMR Southport: base phone 5591 1300, 24 hrs 7 days, 27MHz 86 88 91, VHF 16 22 67 73 82, MF/HF 2182 2524 4125 4483.

CG Southport: base phone 5531 1421, Mon-Thu 0800-1800, 24 hrs w/e (Fri 0800-Sun 1800), 27MHz 91 88 86, VHF 73 21 22 67 81 82 16, MF/HF 2524.

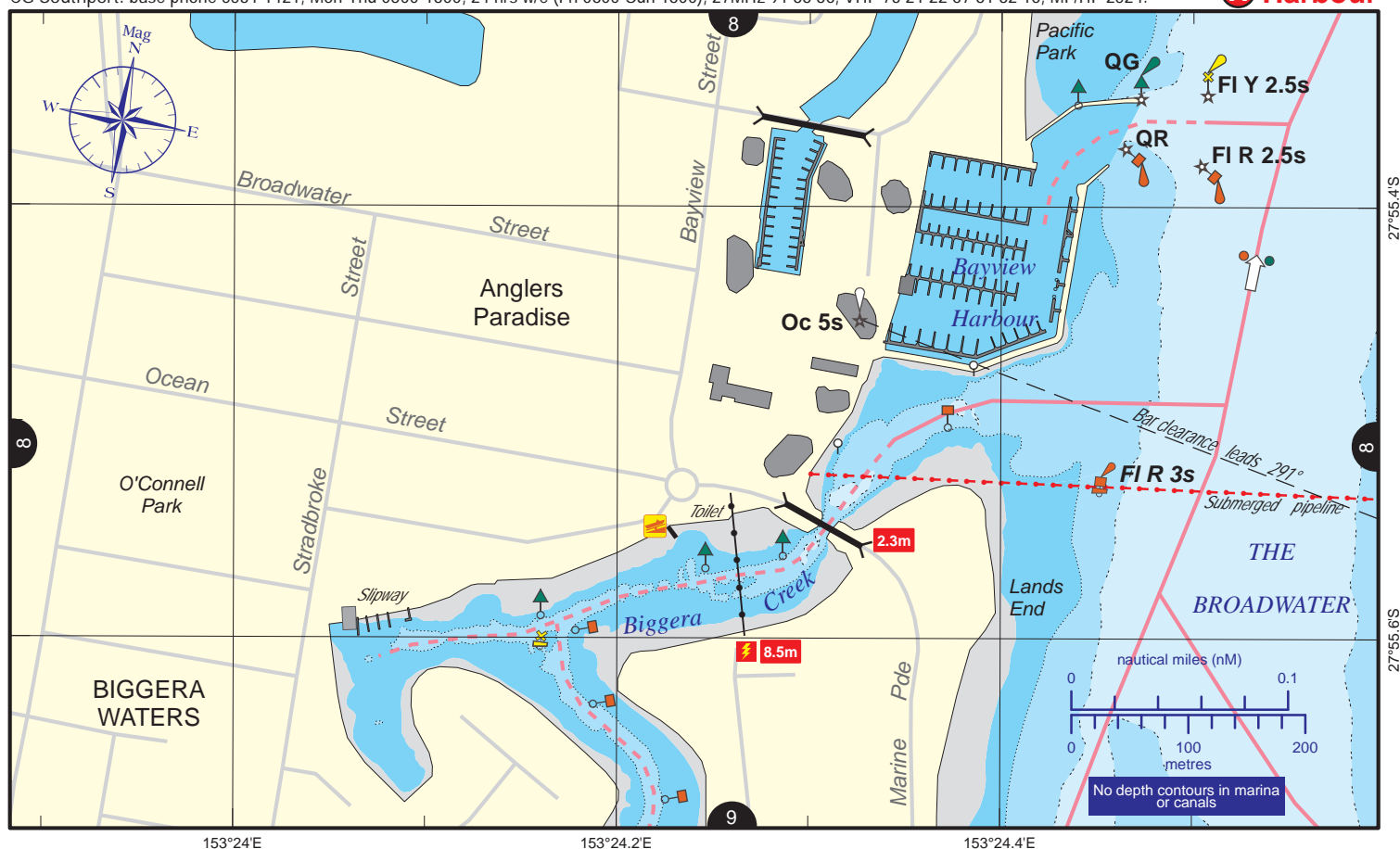
Runaway Bay
Marina



VMR Southport: base phone 5591 1300, 24 hrs 7 days, 27MHz 86 88 91, VHF 16 22 67 73 82, MF/HF 2182 2524 4125 4483.

CG Southport: base phone 5531 1421, Mon-Thu 0800-1800, 24 hrs w/e (Fri 0800-Sun 1800), 27MHz 91 88 86, VHF 73 21 22 67 81 82 16, MF/HF 2524.

Bayview
Harbour



Always keep a proper lookout when boating.

Look up and live for power and cable crossings that may not be shown on these maps due to scale or recent construction.

For depth contour date information, refer to the Key Sheet for this guide. Note that depths may change following floods.

Exercise care when travelling outside suggested navigation tracks.

© Copyright The State of Queensland 2020

Queensland Department of Transport and Main Roads - Maritime Safety Queensland.

To reproduce any map within this series, see terms and conditions at Maritime Safety Queensland's website (www.msq.qld.gov.au)

Nautical information current to 6 July 2020

